



Record C127 X

Minimalist appearance with excellent weather resistance

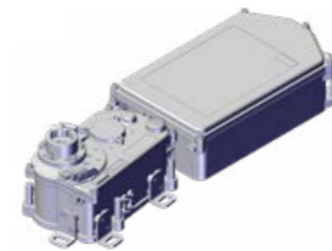
The world's first underfloor drive for swing doors with protection class IP69 – completely watertight! Create the impression of a driverless swing door for a luxury and minimalist appearance

Applications

Especially suitable for offices, luxury boutiques, hotels, public buildings or any premises in need of a discreet entrance solution

Key benefits

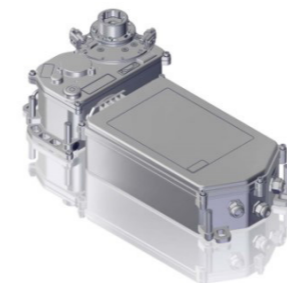
- » Able to move heavy doors up to 600kg in weight
- » IP Class 68 and 69 available for the best protection against snow, ice or rain water
- » Invisible, noiseless drive to compliment surrounding architecture and create a luxury environment
- » Suitable for double leaf door systems (master/slave)
- » Designed for easy and fast installations
- » Low-maintenance & service-friendly



Centre

In the centre design, the door leaf is placed in the middle of the operator and could be used as a lower door mounting.

In case of hinged doors it could be used with a sliding arm which will be mounted directly at the frame.



Offset

In the OFFSET version, the drive axis has been shifted from the centre to the edge of the housing, thereby reducing the clearance to the side wall to only 50 mm.

This ensures that expansion joints or moisture barriers installed in front of the door sill are not affected and the drive can be mounted completely on the inside of the building.

Features

Fully integrated; encapsulated to repel dirt and liquids

The integrated electronic and control unit fulfil the highest Protection Class with an IP69 rating, protecting against water and dust.

Integrated wind load brake

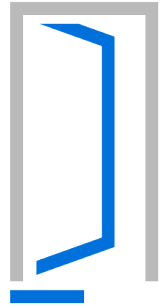
By bringing the door to a controlled stop when under the influence of heavy wind, this brake prevents damage to the door, allowing for use in harsher environments such as by the coast.

Inverse safety option

In the event of a fire this feature allows the door to be used as an air vent opening to allow fresh air to enter the building or for smoke and heat extraction.

Options

Stainless steel cement box
Customized door lever
Threshold plate or Terrazzo tray for invisible integration into the building
Sliding arm and sliding rail
(required for hinged doors)
Operation unit for tablet access



Hidden door drive

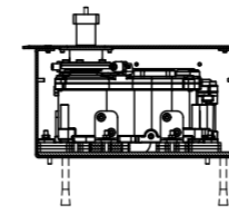
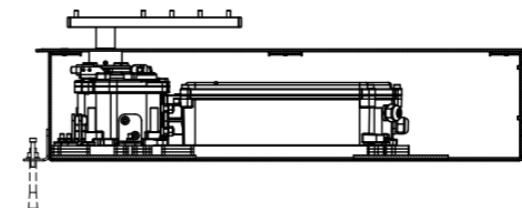
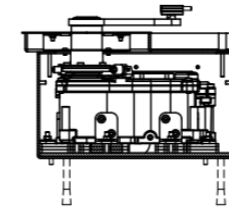
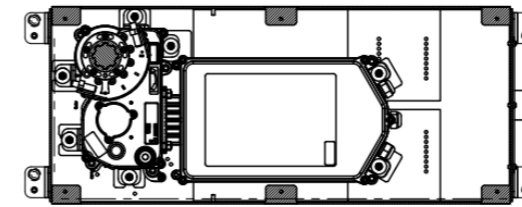
The C127 X door drive can be visually customised to match the surrounding floor, creating the impression of a driverless door.

Technical Specifications

Opening width (one wing)	800 - 1800mm
Opening width (two wings)	1600 - 3600mm
Opening angle	70° - 120°
Opening/closing speed	Adjustable
Maximum passage height	4000mm
Door wing weight (max)	600kg
Maximum moment of inertia	170 kgm ²
Permissible wind speeds in operation	10,000,000 mean cycles (with recommended maintenance)
Rated voltage	50-60Hz
Rated power	67w
Consumption in idle mode	25w
Standard compliance	EN 16005, EN 18650, ANSI 156.19, BS 7036

Technical Data

	Offset	Center
Dimensions (LxWxH)	561 x 258 x 152mm	641 x 231 x 152mm
Dimensions with stainless steel cement box (LxWxH)	840 x 320 x 173mm	840 x 320 x 173mm
Position rotation axis	50 x 50mm	105 x 53mm
Weight	19kg	19kg
IP classification	IP 69	IP 69
Rel. humidity	Up to 85%, no condensate	Up to 85%, no condensate
Temperature range	-15 °C to +50 °C	-15 °C to +50 °C



Operating modes

Manual Mode

The drive is used as a mechanical door closer. The door can be opened without motor resistance and closes purely mechanically with spring force.

Power assist

Allows a door to be opened manually, but opening movement is motor-assisted meaning even heavy doors can be opened effortlessly.

Touch Control

The door requires only a short, fixed pulse to be opened automatically and closes after a selectable time span of 0 - 60 seconds has expired.

Automatic mode

An electronic opening pulse is sent to the door via a sensor, a key switch or a button.

One-way traffic

Ensures the doors only open for people leaving a premises, allowing store owners to shut on time.

Locked

The motor uses full power to resist manual opening of the door wing for effective burglar protection.



For more information

Speak to our sales team

